

LES PARCS Charles Darwin

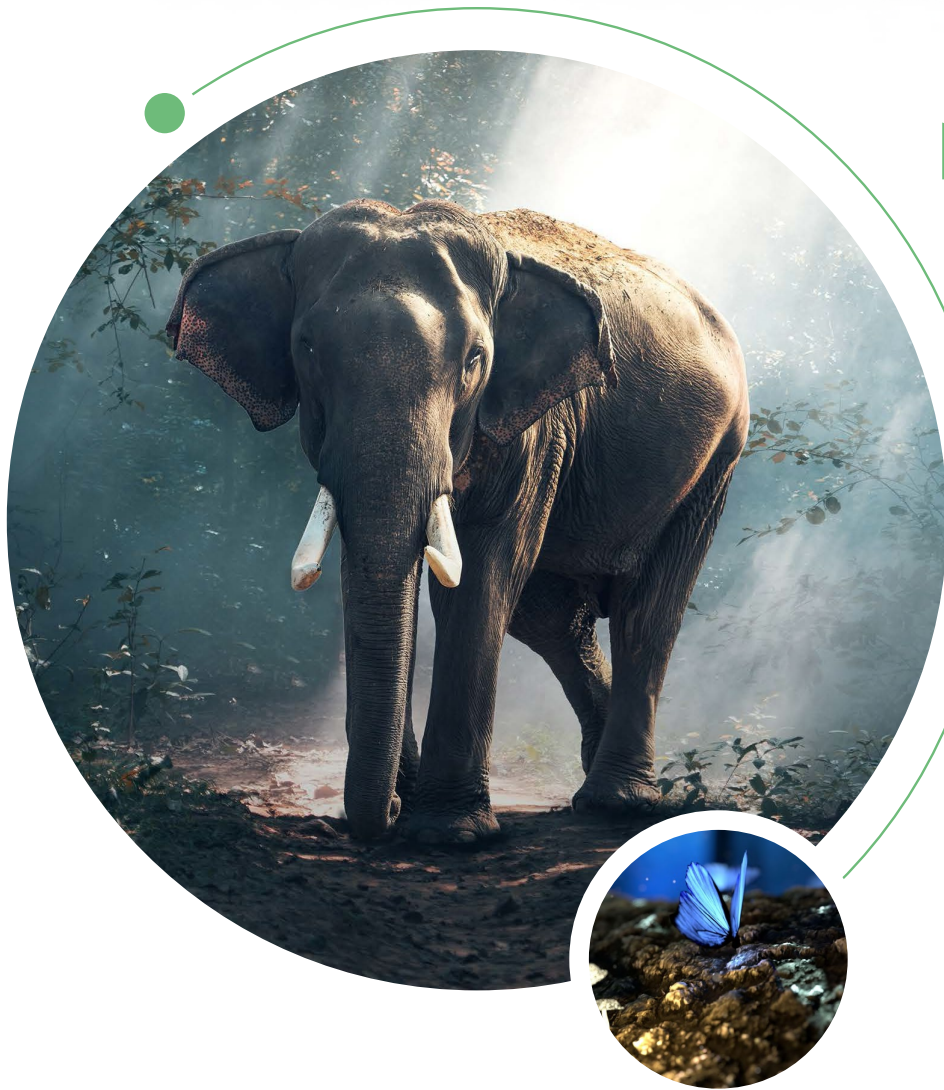


OMPE
ORGANISATION MONDIALE POUR LA
PROTECTION DE L'ENVIRONNEMENT



GENERALE PRESENTATION

These are ultra-modern animal parks created to re-increase the number of animals on Earth. Each Charles Darwin Park represents **2% OF EACH COUNTRY**, composed of maternities, high-level veterinarians, a school, hotels for students and visitors, they collaborate directly with the world genebank. As there are about 200 countries in the world, **there will be 200 Charles Darwin Parks.**



PRINCIPLE OF A CHARLES DARWIN PARK

Each Charles Darwin Park is composed of:

1. the native species of each country **THREATENED WITH EXTINCTION**
2. A **OMPE MATERNITY UNIT** consisting of highly qualified fertilization, care and veterinary equipment, residing on site and benefiting from housing and cafeteria etc.
3. A **GENETIC DEPARTMENT** directly related to the OMPE Global **GENOTHÈQUE**
4. A **SECURITY DEPARTMENT** for global surveillance of the site
5. A **HOTEL** to welcome visitors
6. A **SCHOOL** to welcome students directly with the world library.

Since there are about 200 countries in the world,
there will be 200 Parks Charles Darwin.



Each Charles Darwin Park has an area of 2% of the country concerned, which corresponds to about 2 departments or about 15,000 km² for France, it may be larger if the host country is larger.

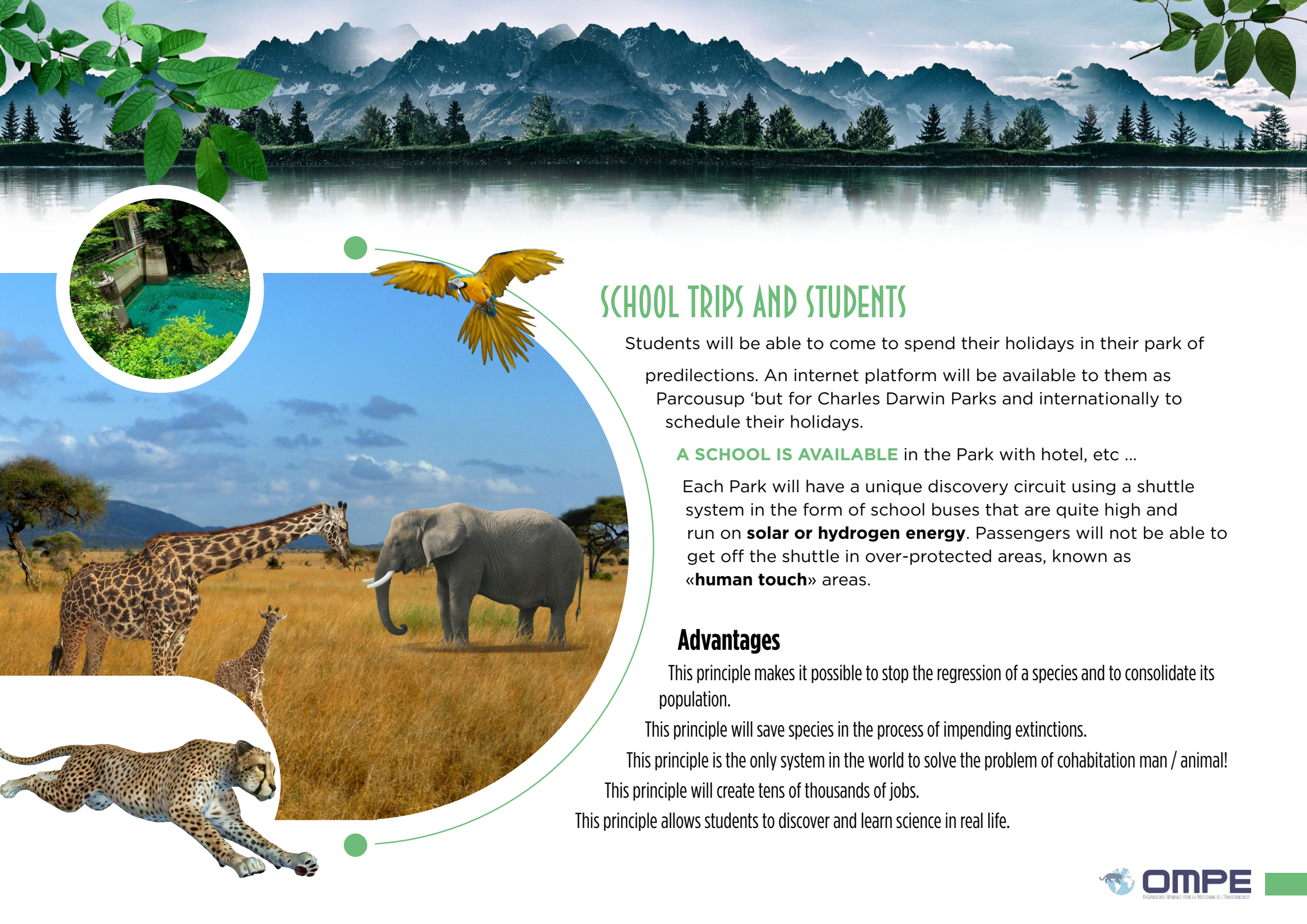
EACH CHARLES DARWIN PARK IS COMPLETELY FENCED by a system of impassable barriers equipped with solar panels and radar to detect any suspicious signs (animal coming out, poacher entering, attempted theft, etc...)

The main entrance is also equipped with an ultrasound-controlled system, people carrying viruses or illness will be systematically prohibited on the site.

A Charles Darwin Park is a giant nursery for animals where everything is done and designed for the well-being and repopulation of animal species threatened with extinction.

A Charles Darwin Park can house species from other countries after studies and agreement of the OMPE animal committee.





SCHOOL TRIPS AND STUDENTS

Students will be able to come to spend their holidays in their park of predilections. An internet platform will be available to them as Parcousup 'but for Charles Darwin Parks and internationally to schedule their holidays.

A SCHOOL IS AVAILABLE in the Park with hotel, etc ...

Each Park will have a unique discovery circuit using a shuttle system in the form of school buses that are quite high and run on **solar or hydrogen energy**. Passengers will not be able to get off the shuttle in over-protected areas, known as «**human touch**» areas.

Advantages

This principle makes it possible to stop the regression of a species and to consolidate its population.

This principle will save species in the process of impending extinctions.

This principle is the only system in the world to solve the problem of cohabitation man / animal!

This principle will create tens of thousands of jobs.

This principle allows students to discover and learn science in real life.

Example of a park on the french territory



shuttle during the visit



Tower guard



Mobile intervention team



Veterinary practice



Maternity

Security building

Genetic Department

Complex

Drone of oversight equipped with thermal camera



